



STAT2 (Ab-690) Antibody

#21536

Catalog Number: 21536-1, 21536-2

Amount: 50µg/50µl, 100µg/100µl

Swiss-Prot No. : P52630

Form of Antibody: Rabbit IgG in phosphate buffered saline (without Mg²⁺ and Ca²⁺), pH 7.4, 150mM NaCl, 0.02% sodium azide and 50% glycerol.

Storage/Stability: Store at -20°C/1 year

Immunogen: The antiserum was produced against synthesized non-phosphopeptide derived from human STAT2 around the phosphorylation site of tyrosine 690 (R-K-Y_P-L-K).

Purification: The antibody was affinity-purified from rabbit antiserum by affinity-chromatography using epitope-specific immunogen.

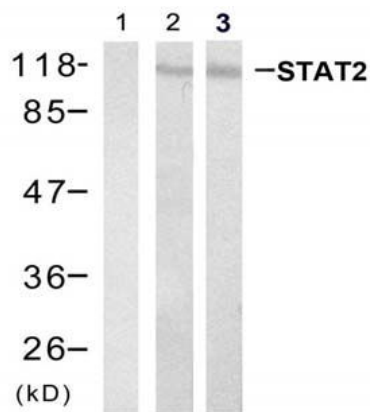
Specificity/Sensitivity: STAT2(Ab-690) antibody detects endogenous levels of total STAT2 protein.

Reactivity: Human

Applications:

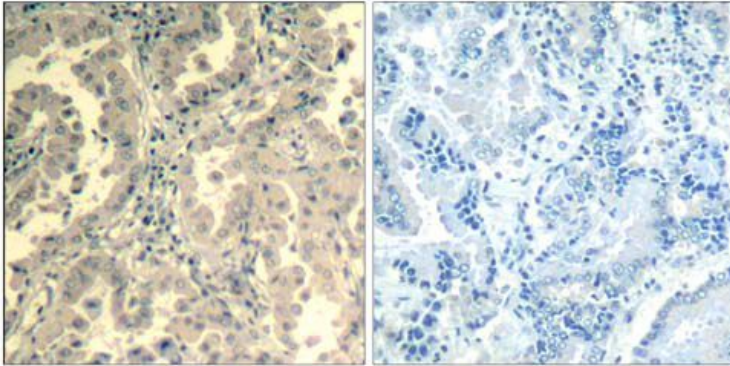
Predicted MW: 113 kd

WB: 1:500~1:1000 IHC: 1:50~1:100



Peptide + - -

Western blot analysis of extracts from Hela cell and HL60 cell using stat2 (Ab-690) Antibody (#21536, Lane 1 2 and 3)



Peptide - +

Immunohistochemical analysis of paraffin-embedded human lung carcinoma tissue using stat2 (Ab-690)Antibody (#21536).

Background :

The protein encoded by this gene is a member of the STAT protein family. In response to cytokines and growth factors, STAT family members are phosphorylated by the receptor associated kinases, and then form homo- or heterodimers that translocate to the cell nucleus where they act as transcription activators

References:

Fu, X. et al. (1992) *Biochemistry* 89, 7840-7843.

Park, C. et al. (2000) *Immunity* 13, 795-804.

Horvath, C. et al. (1996) *Molecular and Cellular Biology* 16, 6957-6964.

Improta, T. et al. (1994) *Proc. Natl. Acad. Sci. USA* 91, 4776-4780.