



Raf1 (Ab-259) Antibody

#21006

Catalog Number: 21006-1, 21006-2

Amount: 50µg/50µl, 100µg/100µl

Swiss-Prot No. : P04049

Form of Antibody: Rabbit IgG in phosphate buffered saline (without Mg²⁺ and Ca²⁺), pH 7.4, 150mM NaCl, 0.02% sodium azide and 50% glycerol.

Storage/Stability: Store at -20°C/1 year

Immunogen: The antiserum was produced against synthesized non-phosphopeptide derived from human Raf1 around the phosphorylation site of serine 259 (S-T-S^P-T-P).

Purification: The antibody was affinity-purified from rabbit antiserum by affinity-chromatography using epitope-specific immunogen

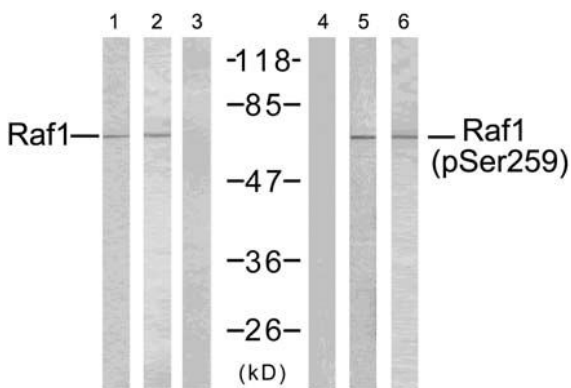
Specificity/Sensitivity: Raf1 (Ab-259) Antibody detects endogenous levels of total Raf1 protein.

Reactivity: Human, Mouse, Rat

Applications:

Predicted MW: 73 kd

WB: 1:500~1:1000 IHC: 1:50~1:100

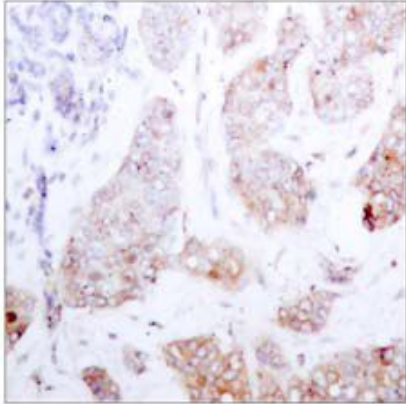


| K562 | MDA-MB-435 | K56

Peptide - - + - - -

P-Peptide - - - + - -

Western blot analysis of extracts using Raf-1 (Ab-259) antibody (#21006, Line 1, 2, and 3) and Raf-1 (phospho-Ser259) antibody (#11006, Line 4, 5, and 6).



Peptide - +

Immunohistochemical analysis of paraffin-embedded
human breast carcinoma tissue using Raf1 (Ab-259)
Antibody (#21006).

Background :

Involved in the transduction of mitogenic signals from the cell membrane to the nucleus. Part of the Ras-dependent signaling pathway from receptors to the nucleus. Protects cells from apoptosis mediated by STK3.

References:

- Dougherty M K, et al. (2005) Mol Cell. 17(2): 215-224.
- Hekman M, et al. (2005) FEBS Lett. 579(2): 464-468.
- Avruch J, et al. (1994) Trends Biochem. Sci. 19, 279-283.
- Chong H, et al. (2001) EMBO J. 20, 3716-3727.
- King A J, et al. (1998) Nature. 396:180-183.
- Fabian J R, et al. (1993) Mol Cell Biol. 13: 7170-7179