



P53 (Phospho-Ser6) Antibody

#11092

Catalog Number: 11092-1, 11092-2

Amount: 50µg/50µl, 100µg/100µl

Swiss-Prot No. : P04637

Form of Antibody: Rabbit IgG in phosphate buffered saline (without Mg²⁺ and Ca²⁺), pH 7.4, 150mM NaCl, 0.02% sodium azide and 50% glycerol.

Storage/Stability: Store at -20°C/1 year

Immunogen: The antiserum was produced against synthesized phosphopeptide derived from human p53 around the phosphorylation site of serine 6 (P-Q-S^P-D-P).

Purification: The antibody was affinity-purified from rabbit antiserum by affinity-chromatography using epitope-specific phosphopeptide. The antibody against non-phosphopeptide was removed by chromatography using non-phosphopeptide corresponding to the phosphorylation site.

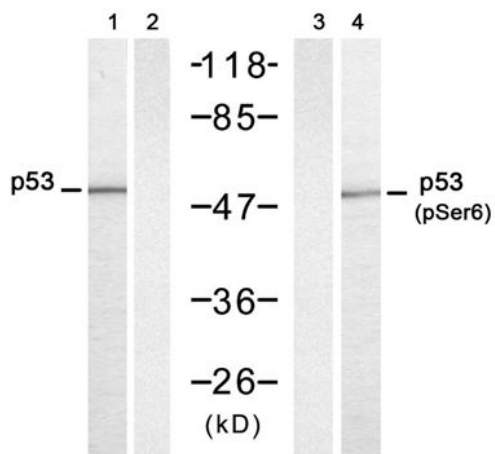
Specificity/Sensitivity: p53 (phospho-Ser6) antibody detects endogenous levels of p53 only when phosphorylated at serine 6

Reactivity: Human, Mouse

Applications:

Predicted MW: 53 kd

WB: 1:500~1:1000



UV - - - +

Peptide - + - -

Western blot analysis of extracts from HT-29 cells untreated or treated with UV (20min), using p53 (Ab-6) antibody (#21083, Lane 1 and 2) and p53 (phospho-Ser6) antibody (#11092, Lane 3 and 4).

Background :

Acts as a tumor suppressor in many tumor types; induces growth arrest or apoptosis depending on the physiological circumstances and cell type. Involved in cell cycle regulation as a trans-activator that acts to negatively regulate cell division by controlling a set of genes required for this process. One of the activated genes is an inhibitor of cyclin-dependent kinases. Apoptosis induction seems to be mediated either by stimulation of BAX and FAS antigen expression, or by repression of Bcl-2 expression. Implicated in Notch signaling cross-over

References:

- Lin T, et al. (2005) Nat Cell Biol; 7(2): 165-71.
- Vega FM, et al. (2004) Mol Cell Biol; 24(23): 10366-80.
- Li J, et al. (2004) J Biol Chem; 279(40): 41275-9.
- Wang J, et al. (2004) J Biol Chem; 279(38): 39584-92.