



p44/42 MAP Kinase (Ab-202)
Antibody

#21237

Catalog Number: 21237-1, 21237-2

Amount: 50µg/50µl, 100µg/100µl

Swiss-Prot No. : P27361

Form of Antibody: Rabbit IgG in phosphate buffered saline (without Mg²⁺ and Ca²⁺), pH 7.4, 150mM NaCl, 0.02% sodium azide and 50% glycerol.

Storage/Stability: Store at -20°C/1 year

Immunogen: The antiserum was produced against synthesized non-phosphopeptide derived from human p44/42 MAP Kinase around the phosphorylation site of threonine 202 (F-L-T^P-E-Y).

Purification: The antibody was affinity-purified from rabbit antiserum by affinity-chromatography using epitope-specific immunogen

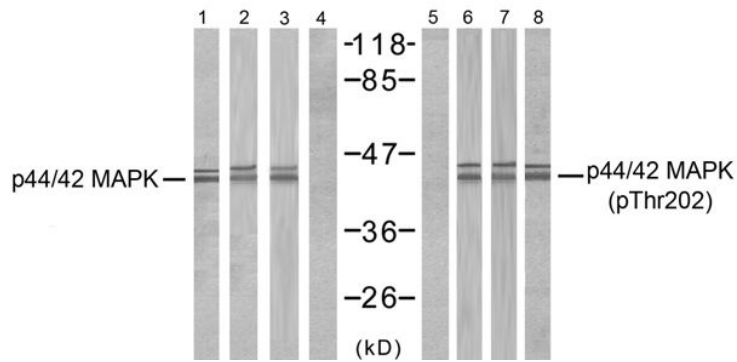
Specificity/Sensitivity: p44/42 MAP Kinase (Ab-202) antibody detects endogenous levels of total p44/42 MAP Kinase protein

Reactivity: Human, Mouse, Rat

Applications:

Predicted MW: 42 44 kd

WB: 1:500~1:1000



NACl	- - - - - + - -	0.7M, 30min
TNF- α	- + - - - - + +	20ng/ml, 30min

Western blot analysis of extracts from MCF7, 293, A431, A2780 and HeLa cells, using p44/42 MAP Kinase (Ab-202) antibody (#21237, Line 1 2 3 4) and p44/42 MAP Kinase (phospho-Thr202) antibody (#11245, Line 7 8 9 10).

Background :

Involved in both the initiation and regulation of meiosis, mitosis, and postmitotic functions in differentiated cells by phosphorylating a number of transcription factors such as ELK-1. Phosphorylates EIF4EBP1; required for initiation of translation. Phosphorylates microtubule-associated protein 2 (MAP2). Phosphorylates SPZ1

References:

TETE HANNKEN, et al. (2000) Am Soc Nephrol 11:1387-1397
 Omar D. PerezNature et al. (2002) Biotechnology 20: 155 - 162
 Jingui Yu, et al. (2005) Anesth Analg 101: 315-321
 Hironobu Ihn et al.(2000) Immunology 165: 2149-2155