



## Tau (Ab-422) Antibody

#21262

**Catalog Number:** 21262-1, 21262-2

**Amount:** 50µg/50µl, 100µg/100µl

**Swiss-Prot No. :** P10636

**Form of Antibody:** Rabbit IgG in phosphate buffered saline (without Mg<sup>2+</sup> and Ca<sup>2+</sup>), pH 7.4, 150mM NaCl, 0.02% sodium azide and 50% glycerol.

**Storage/Stability:** Store at -20°C/1 year

**Immunogen:** The antiserum was produced against synthesized non-phosphopeptide derived from Human Tau around the phosphorylation site of serine 422 (V-D-S<sup>P</sup>-P-Q).

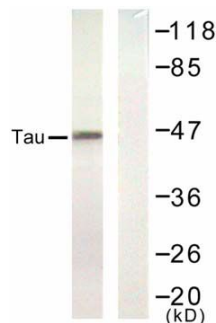
**Purification:** The antibody was affinity-purified from rabbit antiserum by affinity-chromatography using epitope-specific immunogen.

**Specificity/Sensitivity:** Tau (Ab- 422) antibody detects endogenous levels of total Tau protein

**Reactivity:** Human, Mouse, Rat

### Applications:

Predicted MW: 48 62 78 kd      WB: 1:500~1:1000



Western blot analysis of extract from rat hippocampus tissue, using Tau (Ab-422) antibody (#21262).

### Background :

Promotes microtubule assembly and stability, and might be involved in the establishment and maintenance of neuronal polarity. The C-terminus binds axonal microtubules while the N-terminus binds neural plasma membrane components, suggesting that tau functions as a linker protein between both. Axonal polarity is predetermined by tau localization (in the neuronal cell) in the domain of the cell body defined by the centrosome. The short isoforms allow plasticity of the cytoskeleton whereas the longer isoforms may preferentially play a role in its stabilization.

### References:

Gong CX, et al. (2006) J Biomed Biotechnol. 2006: 31825

Gamblin TC, et al. (2003) Proc Natl Acad Sci U S A. 2003 Aug 19; 100(17): 10032-10037

Xu X., et al. (1997) Proc Natl Acad Sci U S A. Nov 11; 94(23): 12655-12660