



SEK1/MKK4 (Phospho-Ser80) Antibody

#11177

Catalog Number: 11177-1, 11177-2

Amount: 50µg/50µl, 100µg/100µl

Swiss-Prot No. : P45985

Form of Antibody: Rabbit IgG in phosphate buffered saline (without Mg²⁺ and Ca²⁺), pH 7.4, 150mM NaCl, 0.02% sodium azide and 50% glycerol.

Storage/Stability: Store at -20°C/1 year

Immunogen: The antiserum was produced against synthesized phosphopeptide derived from Human SEK1/MKK4 around the phosphorylation site of serine 80 (T-H-S_P-I-E).

Purification: The antibody was affinity-purified from rabbit antiserum by affinity-chromatography using epitope-specific phosphopeptide. The antibody against non-phosphopeptide was removed by chromatography using non-phosphopeptide corresponding to the phosphorylation site.

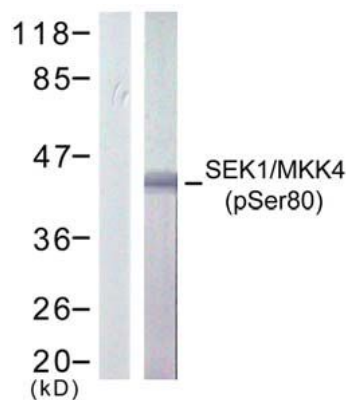
Specificity/Sensitivity: SEK1/MKK4 (phospho-Ser80) antibody detects endogenous levels of SEK1/MKK4 only when phosphorylated at serine 80.

Reactivity: Human, Mouse, Rat

Applications:

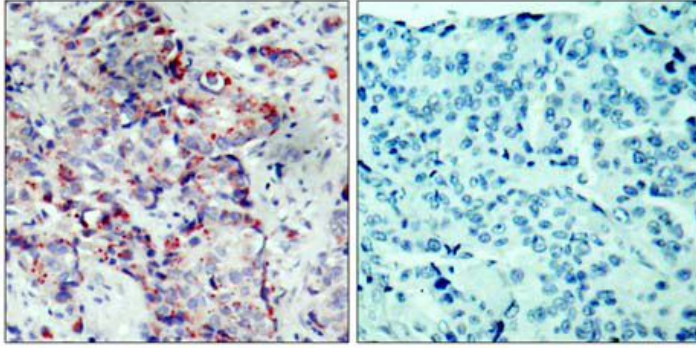
Predicted MW: 44kd

WB: 1:500~1:1000 IHC: 1:50~1:100 IF: 1:100~1:200

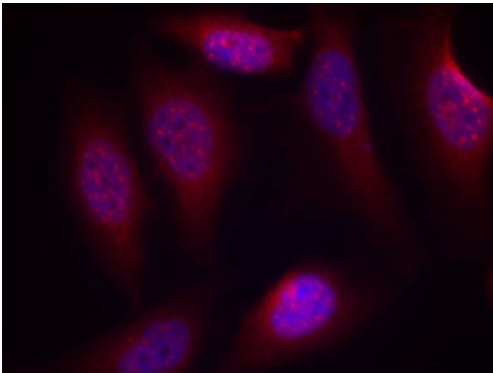


Uv - +

Western blot analysis of extract from 293 cells treated or untreated with UV, using SEK1/ MKK4 (phospho-Ser80) antibody (#11177).



Immunohistochemical analysis of paraffin-embedded human breast carcinoma tissue using SEK1/ MKK4 (phospho-Ser80) antibody (#11177).



Immunofluorescence staining of methanol-fixed HeLa cells using SEK1/ MKK4 (phospho-Ser80) antibody (#11177).

Background :

Dual specificity kinase that activates the JUN kinases MAPK8 (JNK1) and MAPK9 (JNK2) as well as MAPK14 (p38) but not MAPK1 (ERK2) or MAPK3 (ERK1).

References:

Park HS, et al. (2002) J Biol Chem; 277(4): 2573-8.