



Rac1 (Ab-71) Antibody

#21201

Catalog Number: 21201-1, 21201-2

Amount: 50µg/50µl, 100µg/100µl

Swiss-Prot No. : P15154

Form of Antibody: Rabbit IgG in phosphate buffered saline (without Mg²⁺ and Ca²⁺), pH 7.4, 150mM NaCl, 0.02% sodium azide and 50% glycerol.

Storage/Stability: Store at -20°C/1 year

Immunogen: The antiserum was produced against synthesized non-phosphopeptide derived from Human Rac1 around the phosphorylation site of serine 71 (P-L-S^P-Y-P).

Purification: The antibody was affinity-purified from rabbit antiserum by affinity-chromatography using epitope-specific immunogen.

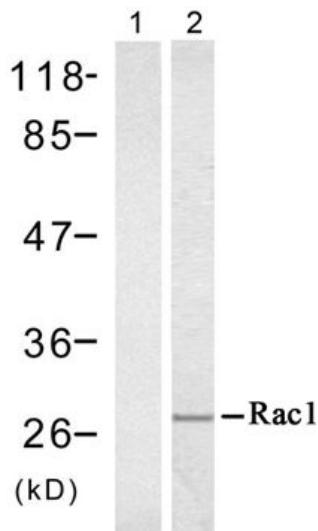
Specificity/Sensitivity: Rac1 (Ab-71) antibody detects endogenous levels of total Rac1 protein

Reactivity: Human, Mouse, Rat

Applications:

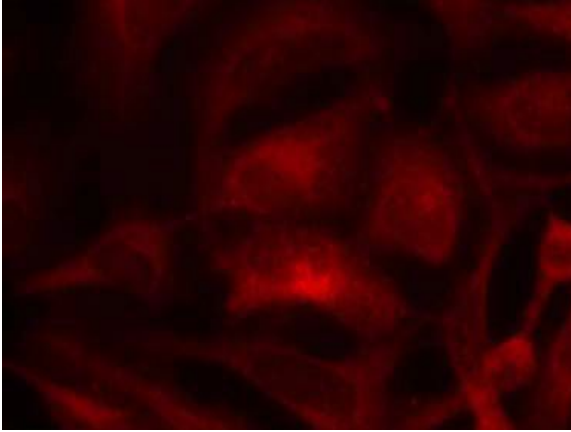
Predicted MW: 28kd

WB: 1:500~1:1000 IF: 1:100~1:200



EGF - +

Western blot analysis of extract from A431 cell untreated or treated with EGF (200ng/ml, 5min), using Rac1 (Ab-71) antibody (#21201).



Immunofluorescence staining of methanol-fixed HeLa cells using Rac1 (Ab-71) antibody (#21201, Red)

Background :

Rac1 encoded by this gene is a GTPase which belongs to the RAS superfamily of small GTP-binding proteins. Members of this superfamily appear to regulate a diverse array of cellular events, including the control of cell growth, cytoskeletal reorganization, and the activation of protein kinases. Two transcript variants encoding different isoforms have been found for this gene.

References:

- Aoki K, et al. (2005) Mol Biol Cell; 16(5): 2207–2217.
- Kwon T, et al. (2000) J Biol Chem; 275(1): 423-428