



## JunD (Ab-255) Antibody

**#21028**

**Catalog Number:** 21028-1, 21028-2

**Amount:** 50µg/50µl, 100µg/100µl

**Swiss-Prot No. :** P17535

**Form of Antibody:** Rabbit IgG in phosphate buffered saline (without Mg<sup>2+</sup> and Ca<sup>2+</sup>), pH 7.4, 150mM NaCl, 0.02% sodium azide and 50% glycerol.

**Storage/Stability:** Store at -20°C/1 year

**Immunogen:** The antiserum was produced against synthesized non-phosphopeptide derived from Human JunD around the phosphorylation site of serine 255 (G-E-S<sup>P</sup>-P-P).

**Purification:** The antibody was affinity-purified from rabbit antiserum by affinity-chromatography using epitope-specific immunogen.

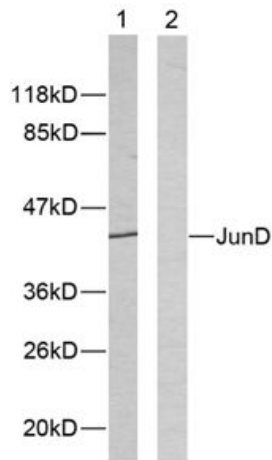
**Specificity/Sensitivity:** JunD (Ab-255) antibody detects endogenous levels of total JunD protein

**Reactivity:** Human, Mouse, Rat

**Applications:**

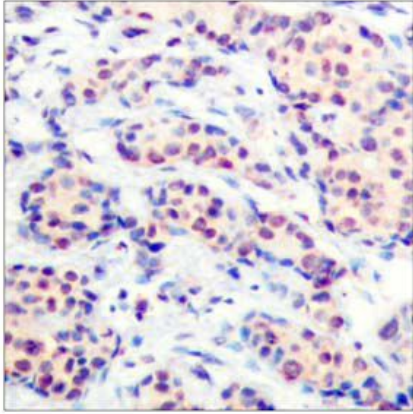
Predicted MW: 38kd

WB: 1:500~1:1000      IHC: 1:50~1:100      IF: 1:100~1:200

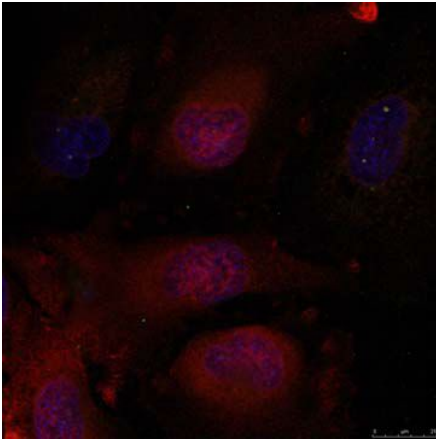


Peptide    -    +

Western blot analysis of extracts from HeLa cells using JunD (Ab-255) antibody (#21028).



Immunohistochemical analysis of paraffin-embedded human breast carcinoma using JunD (Ab-255) antibody (#21028).



Immunofluorescence staining of methanol-fixed HeLa cells using JunD (Ab-255) antibody (#21028, Red).

**Background :**

Binds an AP-1 site and upon cotransfection stimulates the activity of a promoter that bears an AP-1 site

**References:**

Beausoleil S A, et al. (2004) Proc Natl Acad Sci U S A. 101(33): 12130-12135.