



JunD (Phospho-Ser255) Antibody

#11028

Catalog Number: 11028-1, 11028-2

Amount: 50µg/50µl, 100µg/100µl

Swiss-Prot No. : P17535

Form of Antibody: Rabbit IgG in phosphate buffered saline (without Mg²⁺ and Ca²⁺), pH 7.4, 150mM NaCl, 0.02% sodium azide and 50% glycerol.

Storage/Stability: Store at -20°C/1 year

Immunogen: The antiserum was produced against synthesized phosphopeptide derived from Human JunD around the phosphorylation site of serine 255 (G-E-S^P-P-P).

Purification: The antibody was affinity-purified from rabbit antiserum by affinity-chromatography using epitope-specific phosphopeptide. The antibody against non-phosphopeptide was removed by chromatography using non-phosphopeptide corresponding to the phosphorylation site.

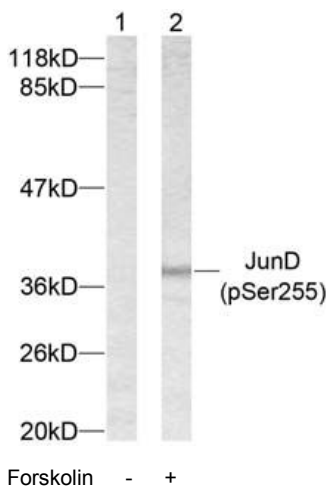
Specificity/Sensitivity: JunD (phospho-Ser255) antibody detects endogenous levels of JunD only when phosphorylated at serine 255.

Reactivity: Human, Mouse, Rat

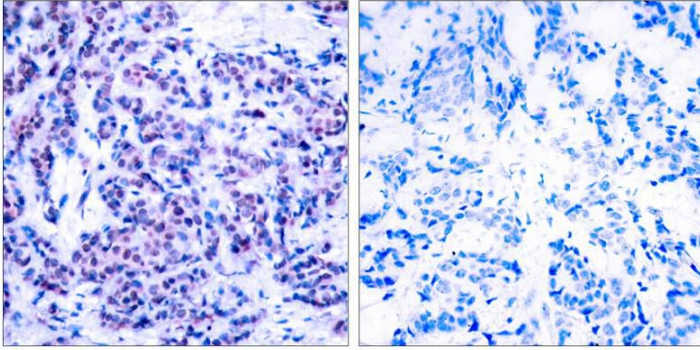
Applications:

Predicted MW: 38kd

WB: 1:500~1:1000 IHC: 1:50~1:100



Western blot analysis of extracts from 293 cells using JunD (phospho-Ser255) antibody (#11028).



Immunohistochemical analysis of paraffin-embedded human breast carcinoma using JunD (phospho-Ser255) antibody (#11028).

Background :

Binds an AP-1 site and upon cotransfection stimulates the activity of a promoter that bears an AP-1 site

References:

Beausoleil S A, et al. (2004) Proc Natl Acad Sci U S A. 101(33): 12130-12135.