



c-Jun (Ab-91) Antibody

#21021

Catalog Number: 21021-1, 21021-2

Amount: 50µg/50µl, 100µg/100µl

Swiss-Prot No. : P05412

Form of Antibody: Rabbit IgG in phosphate buffered saline (without Mg²⁺ and Ca²⁺), pH 7.4, 150mM NaCl, 0.02% sodium azide and 50% glycerol.

Storage/Stability: Store at -20°C/1 year

Immunogen: The antiserum was produced against synthesized non-phosphopeptide derived from Human c-Jun around the phosphorylation site of threonine 91 (T-T-T_P-P-T).

Purification: The antibody was affinity-purified from rabbit antiserum by affinity-chromatography using epitope-specific immunogen.

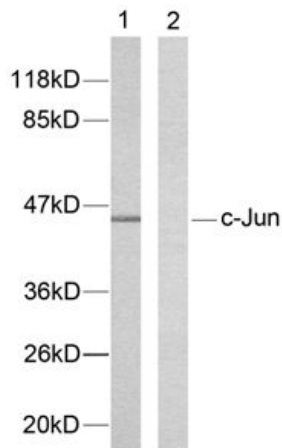
Specificity/Sensitivity: c-Jun (Ab-91) antibody detects endogenous levels of total c-Jun protein

Reactivity: Human, Mouse, Rat

Applications:

Predicted MW: 43kd

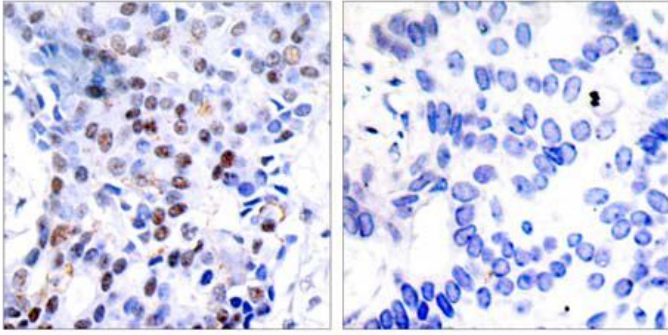
WB: 1:500~1:1000 IHC: 1:50~1:100 IF: 1:100~1:200



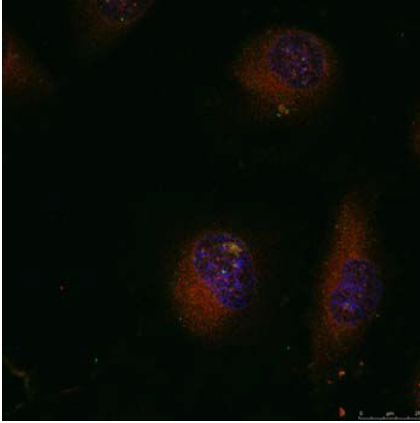
Peptide - +

Western blot analysis of extracts from HeLa cells using c-

Jun (Ab-91) antibody (#21021).



Immunohistochemical analysis of paraffin-embedded human breast carcinoma tissue using c-Jun (Ab-91) antibody (#21021).



Immunofluorescence staining of methanol-fixed HeLa cells using c-Jun (Ab-91) antibody (#21021, Red).

Background :

Transcription factor that recognizes and binds to the enhancer heptamer motif 5'-TGA[CG]TCA-3'.

References:

Akira Ikari, Chiaki Okude, Hayato Sawada, et al. (2008) Down-regulation of TRPM6-mediated magnesium influx by cyclosporin A Naunyn-Schmiedeberg's Archives of Pharmacology, 377(4-6):333-43.

This article references the use of the **#21021** in the following applications :**Western blotting**