



## c-Jun (Ab-170) Antibody

#21023

**Catalog Number:** 21023-1, 21023-2

**Amount:** 50µg/50µl, 100µg/100µl

**Swiss-Prot No. :** P05412

**Form of Antibody:** Rabbit IgG in phosphate buffered saline (without Mg<sup>2+</sup> and Ca<sup>2+</sup>), pH 7.4, 150mM NaCl, 0.02% sodium azide and 50% glycerol.

**Storage/Stability:** Store at -20°C/1 year

**Immunogen:** The antiserum was produced against synthesized non-phosphopeptide derived from Human c-Jun around the phosphorylation site of tyrosine 170 (P-V-Y<sup>P</sup>-A-N).

**Purification:** The antibody was affinity-purified from rabbit antiserum by affinity-chromatography using epitope-specific immunogen.

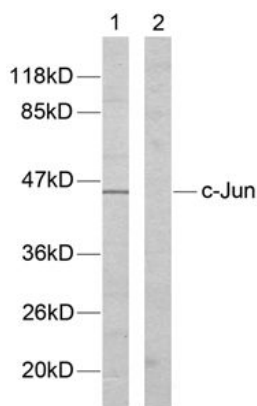
**Specificity/Sensitivity:** c-Jun (Ab-170) antibody detects endogenous levels of total c-Jun protein

**Reactivity:** Human, Mouse, Rat

**Applications:**

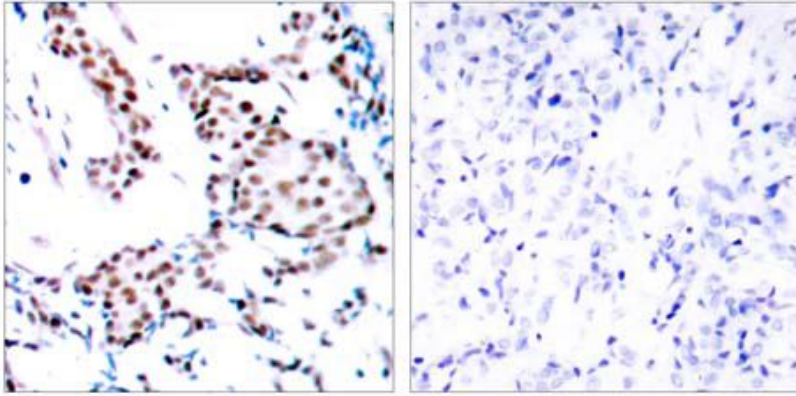
Predicted MW: 43kd

WB: 1:500~1:1000 IHC: 1:50~1:100



Peptide - +

Western blot analysis of extracts from HeLa cells using c-Jun (Ab-170) antibody (#21023).



Immunohistochemical analysis of paraffin-embedded human breast carcinoma tissue using c-Jun (Ab-170) antibody (#21023).

**Background :**

Transcription factor that recognizes and binds to the enhancer heptamer motif 5'-TGA[CG]TCA-3'.

**References:**

Akira Ikari, Chiaki Okude, Hayato Sawada, et al. (2008) Down-regulation of TRPM6-mediated magnesium influx by cyclosporin A Naunyn-Schmiedeberg's Archives of Pharmacology, 377(4-6):333-43.

This article references the use of the **#21023** in the following applications :**Western blotting**