



PKC θ (Ab-695) Antibody

#21185

Catalog Number: 21185-1, 21185-2

Amount: 50 μ g/50 μ l, 100 μ g/100 μ l

Swiss-Prot No. : Q04759

Form of Antibody: Rabbit IgG in phosphate buffered saline (without Mg²⁺ and Ca²⁺), pH 7.4, 150mM NaCl, 0.02% sodium azide and 50% glycerol.

Storage/Stability: Store at -20°C/1 year

Immunogen: The antiserum was produced against synthesized non-phosphopeptide derived from human PKC θ around the phosphorylation site of serine 695 (N-F-S^P-F-M).

Purification: The antibody was affinity-purified from rabbit antiserum by affinity-chromatography using epitope-specific immunogen.

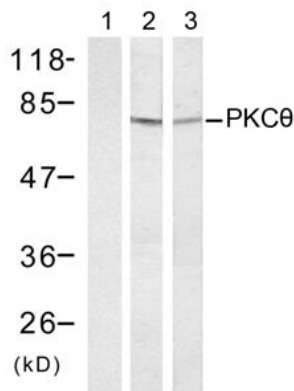
Specificity/Sensitivity: PKC θ (Ab-695) antibody detects endogenous levels of total PKC θ protein.

Reactivity: Human, Mouse, Rat

Applications:

Predicted MW: 80 kd

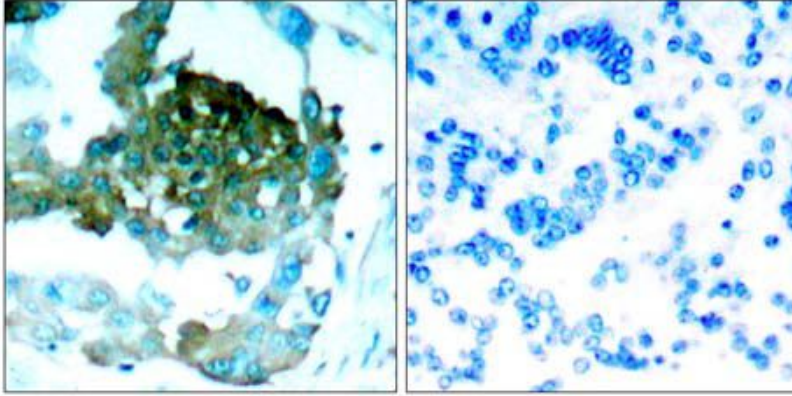
WB: 1:500~1:1000 IHC 1:50~1:200



Anisomycin + + +

Peptide + - -

Western blot analysis of extract from HT-29 (Lane 1 and 2) and K562 cells (Lane 3) treated with Anisomycin (1mM, 30min), using PKC θ (Ab-695) antibody (#21185).



Peptide - +

Immunohistochemical analysis of paraffin-embedded human lung carcinoma tissue, using PKC θ (Ab-695) antibody (#21185).

Background :

This is a calcium-independent, phospholipid-dependent, serine- and threonine-specific enzyme. Essential for T-cell receptor (TCR)-mediated T-cell activation, but is dispensable during TCR-dependent thymocyte development. Links the TCR signaling complex to the activation of NF-kappa-B in mature T lymphocytes. Required for interleukin-2 (IL2) production. PKC is activated by diacylglycerol, which in turn phosphorylates a range of cellular proteins. PKC also serves as the receptor for phorbol esters, a class of tumor promoters

References:

Xu ZB, et al.(2004) J Biol Chem 279:50401-50409

Thebault S, et al. (2004) Mol Immunol 40: 931-942