



HSP27 (Ab-82) Antibody

#21240

Catalog Number: 21240-1, 21240-2

Amount: 50µg/50µl, 100µg/100µl

Swiss-Prot No. : P04792

Form of Antibody: Rabbit IgG in phosphate buffered saline (without Mg²⁺ and Ca²⁺), pH 7.4, 150mM NaCl, 0.02% sodium azide and 50% glycerol.

Storage/Stability: Store at -20°C/1 year

Immunogen: The antiserum was produced against synthesized non-phosphopeptide derived from human HSP27 around the phosphorylation site of serine 82 (Q-L-S^P-S-G).

Purification: The antibody was affinity-purified from rabbit antiserum by affinity-chromatography using epitope-specific immunogen.

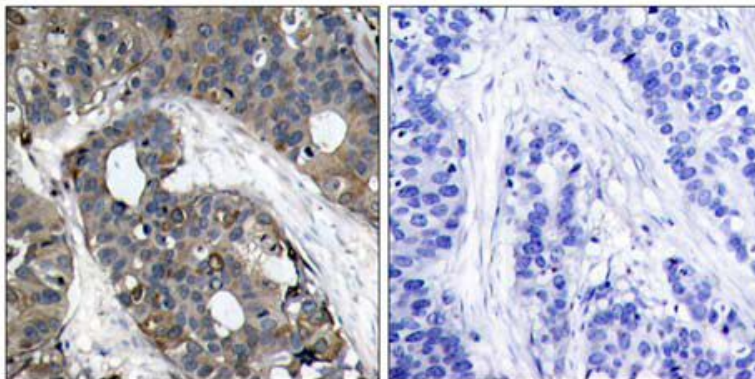
Specificity/Sensitivity: HSP27 (Ab-82) antibody detects endogenous levels of total HSP27 protein.

Reactivity: Human,

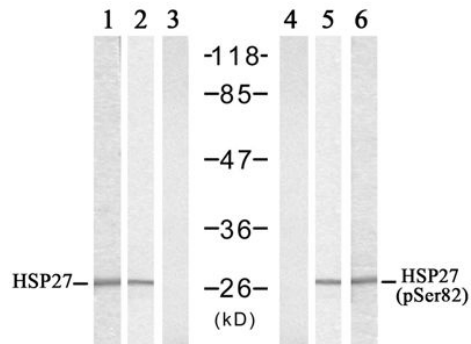
Applications:

Predicted MW: 27kd

WB: 1:500~1:1000 IHC: 1:50~1:100



Peptide - +
 Immunohistochemical analysis of paraffin-embedded human breast carcinoma tissue using HSP27(Ab-82) antibody (#21240).



| | | | | | | |
|------------|---|---|--|---|---|---|
| Heat Shock | + | + | | - | - | + |
| Peptide | - | + | | | | |
| UV | | + | | - | + | |

Western blot analysis of extracts from HeLa cells untreated or treated with Heat Shock or UV, using HSP27 (Ab-82) antibody (#21240, Lane 1, 2 and 3) and HSP27 (Phospho-Ser82) antibody (#11248, Lane 4, 5 and 6).

Background :

Involved in stress resistance and actin organization

References:

- White MY, et al. (2006) J Mol Cell Cardiol. 40(6): 761-74
- Xiankui Sun, et al. (2006) Cell Stress Chaperones. 11(1): 61-70
- Matthias Meier; et al. (2001) Hypertension. 38:1260
- Ali Dana, et al. (2000) Circulation Research. 86: 989