



## Estrogen Receptor- $\alpha$ (Ab-167) Antibody

#21068

**Catalog Number:** 21068-1, 21068-2

**Amount:** 50 $\mu$ g/50 $\mu$ l, 100 $\mu$ g/100 $\mu$ l

**Swiss-Prot No. :** P03372

**Form of Antibody:** Rabbit IgG in phosphate buffered saline (without Mg<sup>2+</sup> and Ca<sup>2+</sup>), pH 7.4, 150mM NaCl, 0.02% sodium azide and 50% glycerol.

**Storage/Stability:** Store at -20°C/1 year

**Immunogen:** The antiserum was produced against synthesized non-phosphopeptide derived from Human Estrogen Receptor- $\alpha$  around the phosphorylation site of serine serine167 (L-A-S<sub>P</sub>-T-N).

**Purification:** The antibody was affinity-purified from rabbit antiserum by affinity-chromatography using epitope-specific immunogen

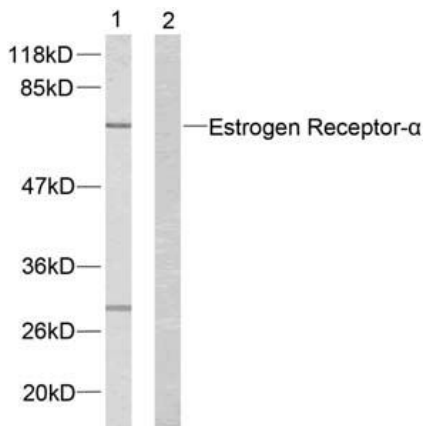
**Specificity/Sensitivity:** Estrogen Receptor- $\alpha$  (Ab-167) antibody detects endogenous levels of total Estrogen Receptor- $\alpha$  protein.

**Reactivity:** Human, Mouse

**Applications:**

Predicted MW: 66 kd

WB: 1:500~1:1000    IHC: 1:50~1:100    IF: 1:100~1:200

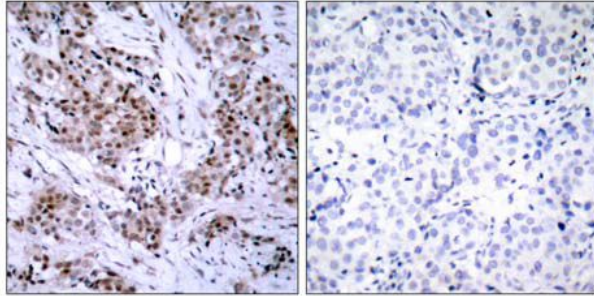


EGF        + +

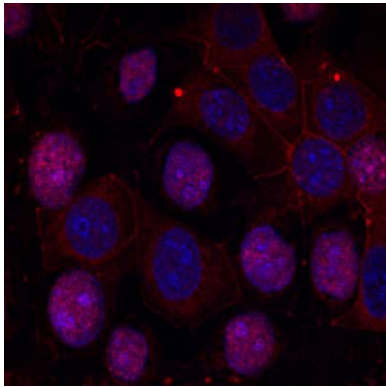
Peptide   - +

Western blot analysis of extracts from MCF7 cells using

Estrogen Receptor- $\alpha$  (Ab-167) antibody (#21068).



Immunohistochemical analysis of paraffin-embedded human breast carcinoma tissue using Estrogen Receptor- $\alpha$  (Ab-167) antibody (#21068).



Immunofluorescence staining of methanol-fixed MCF7 cells using Estrogen Receptor- $\alpha$  (Ab-167) antibody (#21068, Red).

**Background :**

Nuclear hormone receptor. The steroid hormones and their receptors are involved in the regulation of eukaryotic gene expression and affect cellular proliferation and differentiation in target tissues.

**References:**

H Yamaguchi, J Zhu, T Yu, et al. (2007) Serum-free mouse embryo cells generate a self-sustaining feedback loop for an astrocyte marker protein and respond to cytokines and bisphenol A in accordance with the subtle difference in their differentiation state. Cell Biology International, 31(6):638-644.