



Elk-1 (Ab-389) Antibody

#21037

Catalog Number: 21037-1, 21037-2

Amount: 50µg/50µl, 100µg/100µl

Swiss-Prot No. : P19419

Form of Antibody: Rabbit IgG in phosphate buffered saline (without Mg²⁺ and Ca²⁺), pH 7.4, 150mM NaCl, 0.02% sodium azide and 50% glycerol.

Storage/Stability: Store at -20°C/1 year

Immunogen: The antiserum was produced against synthesized non-phosphopeptide derived from Human Elk-1 around the phosphorylation site of serine 389 (P-R-S_P-P-A).

Purification: The antibody was affinity-purified from rabbit antiserum by affinity-chromatography using epitope-specific immunogen

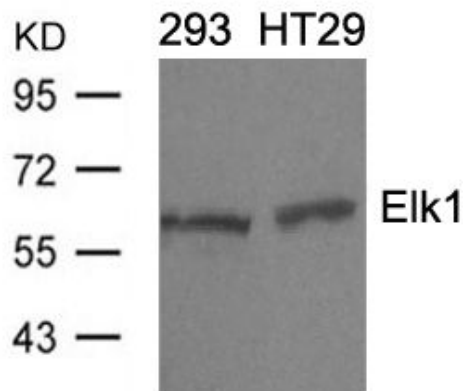
Specificity/Sensitivity: Elk-1 (Ab-389) antibody detects endogenous levels of total Elk-1 protein

Reactivity: Human, Mouse, Rat

Applications:

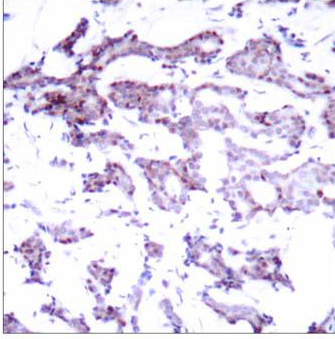
Predicted MW: 62 kd

WB: 1:500~1:1000 IHC: 1:50~1:100 IF: 1:100~1:200

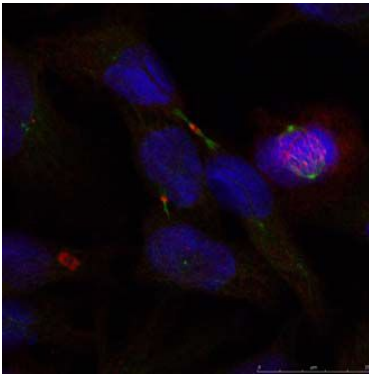


Western blot analysis of extracts from 293 and HT29 cells

using Elk1 (Ab-389) Antibody #21037.



Immunohistochemical analysis of paraffin-embedded human breast carcinoma tissue using Elk-1 (Ab-389) antibody (#21037).



Immunofluorescence staining of methanol-fixed HeLa cells using Elk-1 (Ab-389) antibody (#21037, Red).

Background :

Elk-1 is a member of the Ets family of transcription factors and of the ternary complex factor (TCF) subfamily. Proteins of the TCF subfamily form a ternary complex by binding to the the serum response factor and the serum reponse element in the promoter of the c-fos proto-oncogene. The protein encoded by this gene is a nuclear target for the ras-raf-MAPK signaling cascade. Iternatively spliced transcript variants encoding the same protein have been found for this gene.

References:

- Janknecht R, et al. (1993) EMBO J. 12(13): 5097-5104.
- Marais R, et al. (1993) Cell 73:381-393.
- Kortenjann M, et al. (1994) Mol Cell Biol. 14:4815-4824.
- Hill C S, et al. (1995) Cell. 80:199-211.
- Cavigelli M, et al. (1995) EMBO J. 14:5957-5964.