



## Elk-1 (Ab-383) Antibody

#21004

**Catalog Number:** 21004-1, 21004-2

**Amount:** 50µg/50µl, 100µg/100µl

**Swiss-Prot No. :** P19419

**Form of Antibody:** Rabbit IgG in phosphate buffered saline (without Mg<sup>2+</sup> and Ca<sup>2+</sup>), pH 7.4, 150mM NaCl, 0.02% sodium azide and 50% glycerol.

**Storage/Stability:** Store at -20°C/1 year

**Immunogen:** The antiserum was produced against synthesized non-phosphopeptide derived from Human Elk-1 around the phosphorylation site of serine 383 (T-L-S<sup>P</sup>-P-I).

**Purification:** The antibody was affinity-purified from rabbit antiserum by affinity-chromatography using epitope-specific immunogen

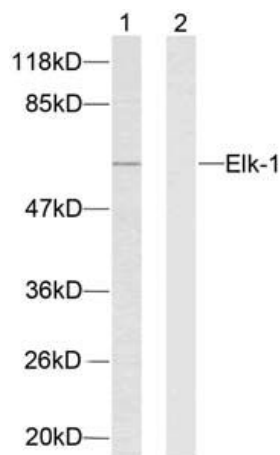
**Specificity/Sensitivity:** Elk-1 (Ab-383) antibody detects endogenous levels of total Elk-1 protein

**Reactivity:** Human, Mouse, Rat

**Applications:**

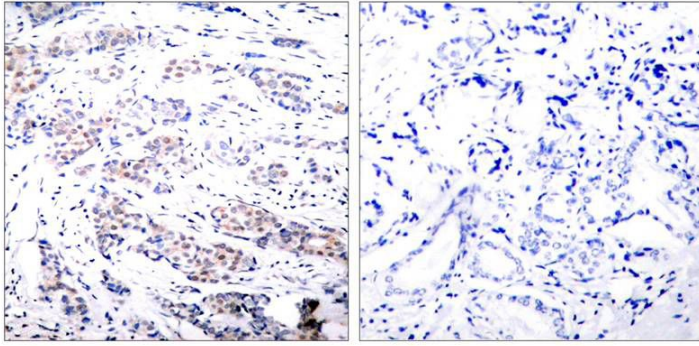
Predicted MW: 62 kd

WB: 1:500~1:1000 IHC: 1:50~1:100



Peptide - +

Western blot analysis of extracts from HeLa cells using Elk-1 (Ab-383) Antibody (#21004).



Immunohistochemical analysis of paraffin-embedded human breast carcinoma tissue using Elk-1 (Ab-383) antibody (#21004).

**Background :**

Elk-1 is a member of the Ets family of transcription factors and of the ternary complex factor (TCF) subfamily. Proteins of the TCF subfamily form a ternary complex by binding to the the serum response factor and the serum reponse element in the promoter of the c-fos proto-oncogene. The protein encoded by this gene is a nuclear target for the ras-raf-MAPK signaling cascade. Iternatively spliced transcript variants encoding the same protein have been found for this gene.

**References:**

- Xing J, et al. (1996) *Science*. 273(5277): 959-963.
- Janknecht R, et al. (1993) *EMBO J*. 12(13): 5097-5104.
- Marais R, et al. (1993) *Cell* 73: 381-393.
- Kortenjann M, et al. (1994) *Mol Cell Biol*. 14: 4815-4824.
- Cavigelli M, et al. (1995) *EMBO J*. 14: 5957-5964
- Whitmarsh A J, et al. (1995) *Science*. 269:403-407.