



Synapsin (Ab-9) Antibody

#21259

Catalog Number: 21259-1, 21259-2

Amount: 50µg/50µl, 100µg/100µl

Swiss-Prot No. : P17600

Form of Antibody: Rabbit IgG in phosphate buffered saline (without Mg²⁺ and Ca²⁺), pH 7.4, 150mM NaCl, 0.02% sodium azide and 50% glycerol.

Storage/Stability: Store at -20°C/1 year

Immunogen: The antiserum was produced against synthesized non-phosphopeptide derived from Human synapsin around the phosphorylation site of serine 9 (R-L-S_p-D-S).

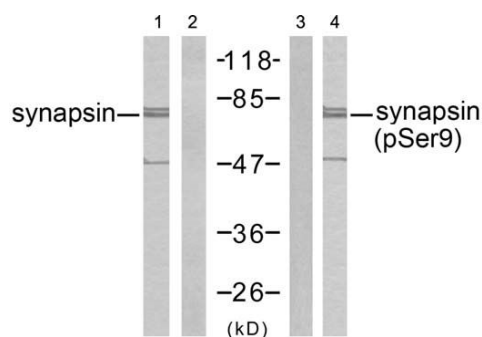
Purification: The antibody was affinity-purified from rabbit antiserum by affinity-chromatography using epitope-specific immunogen.

Specificity/Sensitivity: synapsin (Ab-9) antibody detects endogenous levels of total synapsin protein

Reactivity: Human, Mouse, Rat

Applications:

Predicted MW: 77 kd WB: 1:500~1:1000



Western blot analysis of extract from mouse brain tissue, using synapsin (Ab-9) antibody (#21259, Line 1 and 2) and synapsin (phospho-Ser9) antibody (#11267, Line 3 and 4).

Peptide - + - -

Background :

Neuronal phosphoprotein that coats synaptic vesicles, binds to the cytoskeleton, and is believed to function in the regulation of neurotransmitter release. The complex formed with NOS1 and CAPON proteins is necessary for specific nitric-oxid functions at a presynaptic level

References:

Diviya Sinha, et.al. (2005) Am J Physiol Renal Physiol ; 288: F703 - F713.

Franco Onofri, et.al. (2000) J. Biol. Chem ; 275: 29857.

Dario Bonanomi, et.al. (2005) J. Neurosci; 25: 7299 - 7308.

Hiroshi Tokumitsu, et.al. (2005) J. Biol. Chem ; 280: 35108 - 35118.