



PLC γ 1 (Ab-771) Antibody

#21523

Catalog Number: 21523-1, 21523-2

Amount: 50 μ g/50 μ l, 100 μ g/100 μ l

Swiss-Prot No. : P19174

Form of Antibody: Rabbit IgG in phosphate buffered saline (without Mg²⁺ and Ca²⁺), pH 7.4, 150mM NaCl, 0.02% sodium azide and 50% glycerol.

Storage/Stability: Store at -20°C/1 year

Immunogen: The antiserum was produced against synthesized non-phosphopeptide derived from Human PLC γ 1 around the phosphorylation site of tyrosine 771 (P-D-Y_P-G-A).

Purification: The antibody was affinity-purified from rabbit antiserum by affinity-chromatography using epitope-specific immunogen.

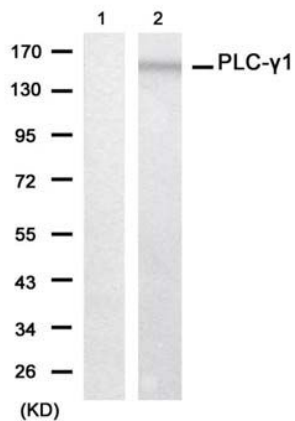
Specificity/Sensitivity: PLC γ 1 (Ab-771) antibody detects endogenous levels of total PLC γ 1 protein

Reactivity: Human, Mouse, Rat

Applications:

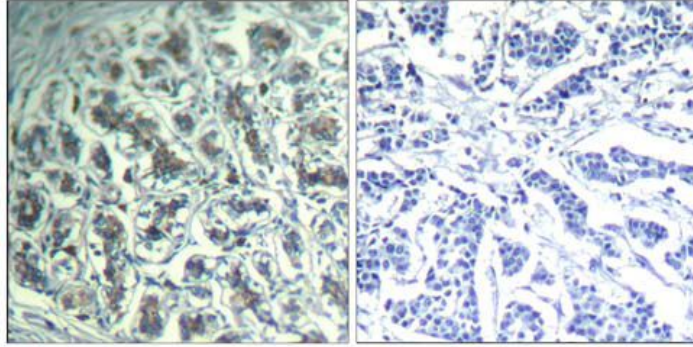
Predicted MW: 155 kd

WB : 1:500~1:1000 IHC : 1:50~1:200



Peptide + —

Western blot analysis of extracts from 293 cell using PLC- γ 1 (Ab-771) Antibody (#21523, Lane 1 and 2)



Peptide - +

Immunohistochemical analysis of paraffin-embedded human breast carcinoma tissue using PLC- γ 1 (Ab-771) Antibody (#21523).

Background :

PLC- γ is a major substrate for heparin-binding growth factor 1 (acidic fibroblast growth factor)-activated tyrosine kinase.

References:

- Singer, W. D. et al. (1997) *Annu. Rev. Biochem.* 66, 475-509.
- Yue, C. et al. (1998) *J. Biol. Chem.* 273, 18023-18027.
- Wang, Z. et al. (1998) *Mol. Cell. Biol.* 18, 590-597.
- Kim, H. K. et al. (1991) *Cell* 65, 435-441.
- Margolis, B. et al. (1989) *Cell* 57, 1101-1107.