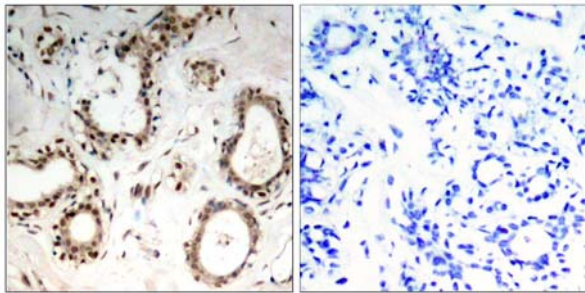


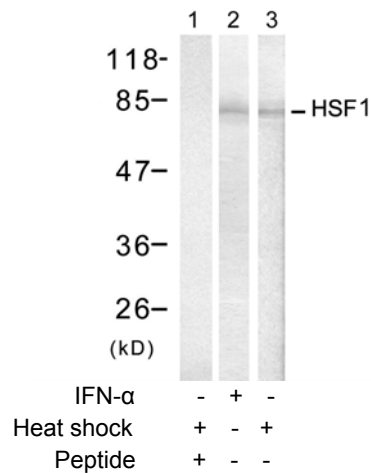
HSF1 (Ab-307) Antibody

- Catalog Number:** 21206-1, 21206-2
Amount: 50µg/50µl, 100µg/100µl
Swiss-Prot No. : Q00613
Form of Antibody: Rabbit IgG in phosphate buffered saline (without Mg²⁺ and Ca²⁺), pH 7.4, 150mM NaCl, 0.02% sodium azide and 50% glycerol.
Storage/Stability: Store at -20°C/1 year
Immunogen: The antiserum was produced against synthesized non-phosphopeptide derived from human HSF1 around the phosphorylation site of serine 307 (P-Q-S^P-P-R).
Purification: The antibody was affinity-purified from rabbit antiserum by affinity-chromatography using epitope-specific immunogen.
Specificity/Sensitivity: HSF1 (Ab-307) antibody detects endogenous levels of total HSF1 protein.
Reactivity: Human
Applications: WB: 1:500~1:1000 IHC: 1:50-1:100
References: Guettouche T, et al. (2005) BMC Biochem ; 6(1): 4
Wang X, et al. (2003) Mol Cell Biol ; 23(17): 6013-6026
Jolly C, et al. (1999) Proc Natl Acad Sci USA; 96(12): 6769-6774.



Peptide - +

Immunohistochemical analysis of paraffin-embedded human breast carcinoma tissue, using HSF1 (Ab-307) antibody (#21206).



Western blot analysis of extracts from HeLa cells treated with IFN or Heat shock, using HSF1 (Ab-307) antibody (#21206, Lane 1, 2 and 3).